

MAAD.



ABOUT MAAD.

Mullally Architecture and Design are an RIBA Chartered Architecture practice, based in Broadstairs and working across Kent, London and the South East.

Established in 2019, by Chartered Architect Tom Mullally (RIBA ARB), we provide our design and consultation expertise to clients across a wide range of sectors.

From architectural design and feasibility studies, to project management and planning consultation, we offer all of our clients innovative ideas and pragmatic responses to ensure they get the very best from their projects.



Tom Mullally

Director BA (Hons) MArch PG.Dip ARB RIBA

Tom studied at the University of Brighton for his Degree and Masters in Architecture, prior to completing his Part III Postgraduate Diploma at the University of Westminster.

Throughout his architectural education, he engaged in designing to support sustainable futures and to integrate innovative technologies. During his masters, he studied under Katrin Bohn and Andre Viljoen, focusing on the environmental challenges that present themselves today. The importance of a sustainability and environmentally conscious design and process has embedded itself into the ethos of MAAD.

He has since attended courses on both inclusive and sustainable urban development led by Architects Sans Frontiers, and the future of sustainable cities, led by Lund University. Tom has acted as a guest critic at the University of Brighton for Masters and Degree level architecture students, a panelist for the RIBA Emerging Practices Group, a mentor to Part II students at Kent School of Architecture and had lectured at the UK Creative Festival for young people looking to explore creative careers.

Tom has worked in a variety of practices in London, Brighton, Kent and Brussels, across sectors spanning retail, residential, hospitality, disaster relief and community development projects. Some of these projects include volunteering at an earthquake disaster relief programme in Sindhupalchok, Nepal; designing a youth rehabilitation facility in Liege, Belgium; planning consultation for numerous listed and conservation area projects; alongside working with luxury retail brands including Hugo Boss, Dior, Levis and Jimmy Choo.

WHY USE AN RIBA CHARTERED ARCHITECTURE PRACTICE

A RIBA (Royal Institute of British Architects) chartered architecture practice refers to an architectural firm that has met the standards and criteria set by the RIBA. Some benefits for using a RIBA chartered architecture practice are set out below:

Professionalism and Expertise: RIBA chartered practices uphold high professional and ethical standards, demonstrating expertise in architecture and design.

Quality Assurance: These practices undergo rigorous assessment, ensuring they deliver high-quality architectural services.

Design Excellence: RIBA chartered practices are known for their innovative and well-designed projects, meeting clients' specific requirements.

Compliance and Legal Awareness: These practices stay updated on regulations, codes, and legal requirements in the architectural field.

Continuing Professional Development: RIBA promotes ongoing learning and development for its chartered members, keeping them at the forefront of industry trends.

Client Protection: RIBA offers a complaints procedure and dispute resolution service, providing clients with added protection and assistance.

Overall, using a RIBA chartered architecture practice offers numerous advantages; these include professionalism, quality assurance, design excellence, compliance, and client protection. It is a reliable choice for those seeking architectural services of the highest standard.



OUR ETHOS

MAAD have a passion for improving people's lives through positive interventions within the built environment.

We guide our clients through the lifespan of their project; from concept to successful completion, working closely with contractors and consultants and offering flexible fee appointments to help our clients manage their costs.

We believe that with professionalism, hard-work & creative thinking, every project can be given the lasting legacy that it deserves.



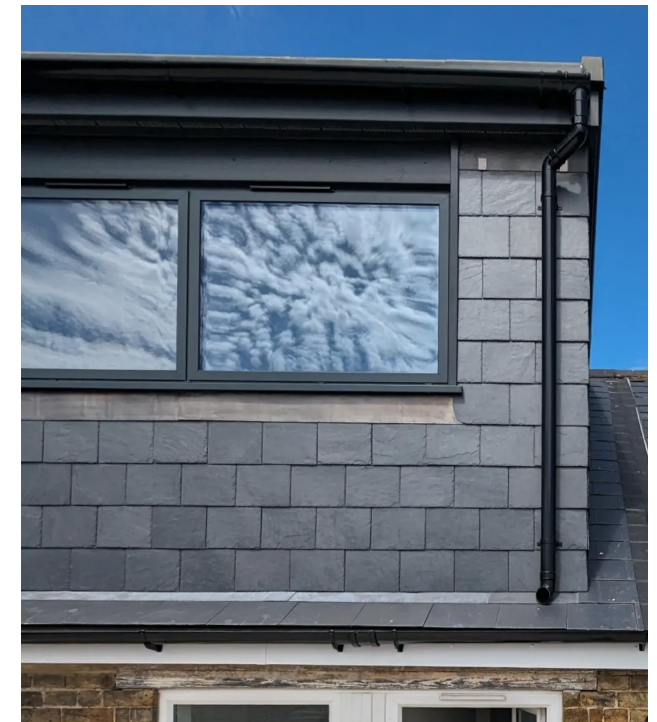
...Very responsive and supportive throughout my project, making me comfortable in considering the best options. [...] focused and energetic with the authorities on achieving the targeted planning consents and building control certificates. In addition, his fees are reasonable, best value service you may find."



Imaginative, constructive and professional all the way from initial consultation through drawings and dealing with the council to gaining planning permission. A pleasure do business with."



...creative yet practical in design and a friendly, approachable and thoroughly professional firm. I hope for an opportunity to work with Tom again and recommend his firm 100%."

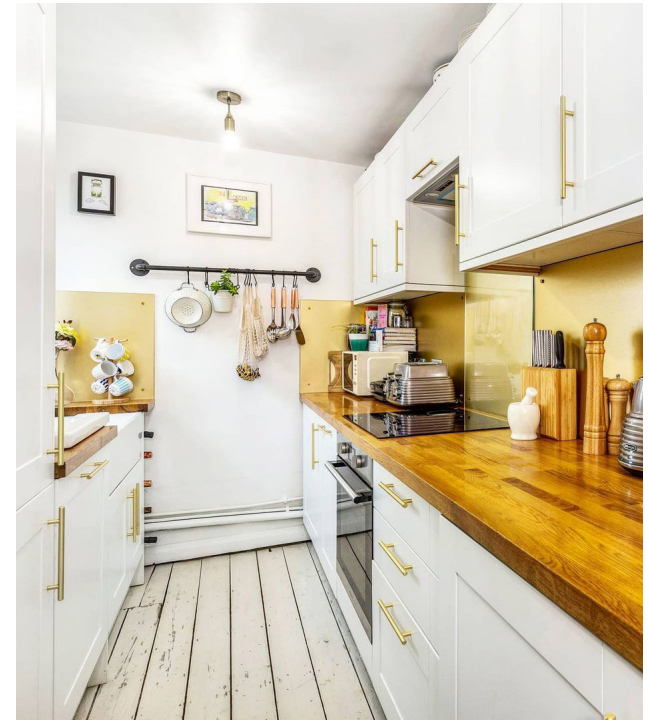




...explains the whole process in easy to understand terminology and is a quick to respond to questions and queries whenever they arise."



...passionate about architecting effective designs that look amazing and at the same time are efficient and easy to use. [...] an architect who understands and works with the building structure and not against it which results in more cost effective project. It is always a pleasure to work with Tom and I look forward to working with him again in the future."





Our kitchen was a particularly difficult project. We had met a number of architects and some ran from the idea. Other ideas didn't suit, or seemed unworkable. From contacting Tom to the beautiful finished product, we have felt nothing but assured and confident that we had chosen the right architect.

He took time to understand us, the funky layout of our kitchen and realised a plan that has been truly life changing. That he was on hand to deal with any issues that cropped up was an added bonus. We couldn't recommend Tom and MAAD enough."



We tried submitting our own application for planning consent in order for us to comply with local conservation area status. We soon realised it wasn't as easy as that and at really short notice we asked MAAD to help us out. Within a couple of days, Tom visited us, drew up the plans, completed all the necessary statements and took care of submitting them all on our behalf and being point of contact for TDC. Full approval received at first time and that's all down to the work of MAAD.

Would recommend MAAD [...] in a heartbeat and will definitely use them for anything else we need."

OUR APPROACH

RIBA Stages 0-2: We love this part, and see it as a playful exercise to think outside the box for a unique and ambitious design. We first meet with our new clients and learn about what drives them and their project goals, forming a brief for the scheme and an understanding of how we will add value to the process. We visit the site, carrying out a detailed survey, and producing a quality set of existing drawings. This is also when the concept design starts, the exciting, early exploration of how design can help achieve the aims of the brief.

RIBA Stage 3: A fundamental part of the project to get right. Here we produce, submit and monitor the Planning Application (where project relevant), closely coordinating with the Local Planning Authority and offering the application the best chance of success through actively responding to the queries, comments and challenges that are inherent of the planning procedure. Depending on the planning parameters and project complexity, we will sometimes encourage the involvement of a planning consultant to help support this process.

RIBA Stage 4: The 'sharp pencil part'. Here we turn the developed design into detailed design, forming and coordinating a Building Control application whilst working closely with a client appointed structural engineer (recommendations can be offered) and contracting team throughout this process. This information can be issued to build teams for pricing.

RIBA Stages 5-7: Perhaps the most exciting stage, where we see the design come to fruition and eventually the built product completed for the enjoyment of the end user. Here we provide assistance with contractor research and interviews, site visits, progress and defect inspections, contract administration, etc, and we can also work with a quantity surveyor at this stage (or earlier, subject to client requirements) to help review tenders, balance budgets and forecast spending throughout the construction.



OUR COLLABORATIONS

We work with a range of consultants, contractors and numerous professionals across the sector with an approach of cooperation and collaboration towards a shared end goal.

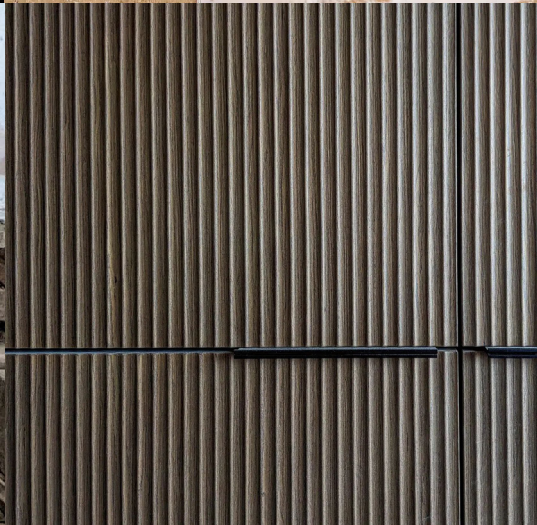
Whether it's building contractors, planning consultants, quantity surveyors, structural engineers, graphic designers, interior and landscape designers, and so on – we take the view that one must work closely with and listen to the expertise of specialists in each field, offering our own knowledge and experience to get the best out of every project we work on.

PROJECT TIMEFRAMES

Time frames are informed by project brief, size, scope, sector, context, parameters and client goals, and are aligned with the RIBA Plan of Work, a tried and tested method to aspire towards professional excellence.

We offer a bespoke service for all of our projects, to reflect the client needs and site context, with reduced errors and plenty of detail for planners, contractors, consultants and other project stakeholders.

We aim to offer clarity to our clients on time frames, ensuring we can realistically dedicate the time and detail to the project process for a quality end product, and are happy to discuss this with you at any time.



FEES

In our fee proposals, we set out tried and tested methods to get the best out of our projects, which includes a site survey and photographic inspection prior to commencement.

Following this the production of quality existing drawings to work with; a playful concept stage to explore the wider proposal; developed and technical design packages for planning, building control review, contractor pricing and construction; preparation and coordination of planning and building control applications; regular, in-person site visits to ensure important observations can be made, discussed and actioned; etc.

And it is so important to us that clients understand what services we provide, how they are charged, and that unforeseen fees are avoided wherever possible.

To help achieve this goal, we provide personalised fee proposals for every project that comes our way. This provides plenty of information on the structure of our service proposals, taking into account the project goals and how best we can help you achieve these, what happens at each stage, and our associated fees.



Mullally Architecture and Design,

42 Albion Street, Broadstairs,
Kent, CT10 1NE, UK

+44 (0) 7377 574 615

+44 (0) 1843 307 211

tom@maaduk.com

www.maaduk.com

[instagram.com/maad_uk](https://www.instagram.com/maad_uk)

[houzz.co.uk/pro/maaduk](https://www.houzz.co.uk/pro/maaduk)

If you would like to discuss your project with us, please do get in touch and we shall arrange a coffee and a chat to see how we can help achieve your project goals.

